

AP210

Fanless Industrial PC for Edge Control and Automation

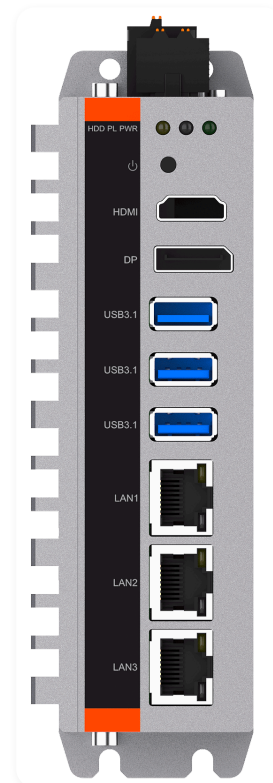
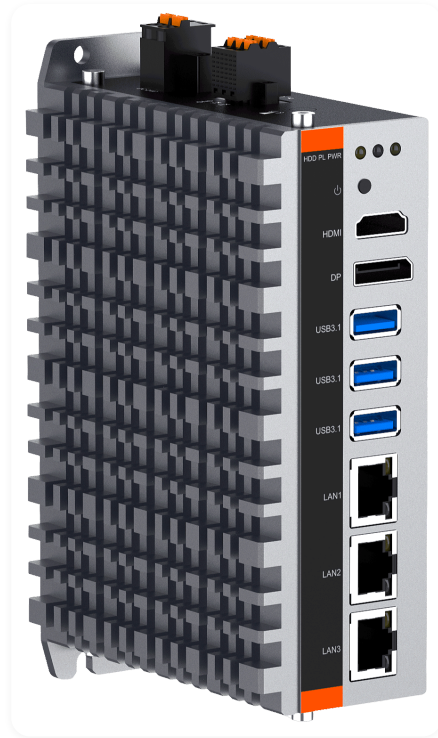
Product Overview

The AP210 is a compact, fanless automation PC for edge computing, industrial control, and embedded applications. Built around the Intel Celeron J6412 (10W TDP), it delivers x86 performance in a passively cooled aluminium-magnesium alloy chassis measuring just 138 × 102 × 48 mm. No moving parts, no filters and designed to run unattended in dusty or dirty environments across a -20°C to 60°C operating range.

Three independent GbE LAN ports support network segregation and multi-zone connectivity. RS232 and RS485 handle legacy device integration. A miniPCIe slot accepts optional Wi-Fi, 4G or 5G modules. DIN rail or wall mountable. Configured and tested in Norwich, with direct UK engineering support.

Product Highlights

- Intel Celeron J6412, 2.0-2.6 GHz, 4 cores / 4 threads, 10W TDP
- Fully fanless - no moving parts
- Up to 32 GB DDR4-3200 MHz (1 x SO-DIMM)
- 1 x M.2 2242 SSD
- 3 x Intel GbE LAN
- 1 x RS232, 1 x RS485
- 3 x USB 3.1
- HDMI (up to 3840 x 2160 @ 60Hz) and DisplayPort (up to 4096 x 2160 @ 60Hz)
- 1 x miniPCIe slot with SIM holder (Wi-Fi / 4G / 5G)
- DC 12-24V input with overcurrent, overvoltage and polarity protection
- Operating temperature: -20°C to 60°C
- Wall mount or DIN rail - 138 x 102 x 48 mm, 1.06 kg
- Windows 10/11 and Linux
- CE / FCC Class B



Technical Specifications

System	
CPU	Intel Celeron J6412, 2.0–2.6 GHz, 4 cores / 4 threads, 1.5 MB L2 cache, 10W TDP
Serial	1 x RS232, 1 x RS485
BIOS	AMI UEFI 256 Mb
Ethernet	3 x Intel GbE LAN
RAM	1 x SO-DIMM DDR4-3200 MHz, up to 32 GB
Display	HDMI: up to 3840 x 2160 @ 60Hz DisplayPort: up to 4096 x 2160 @ 60Hz
SSD/NVMe	1 x M.2 2242 slot supporting the following variants: <ul style="list-style-type: none"> 64, 128, 256, 512 GB, 1 TB, 2 TB capacities
Expansion	1 x Full-size PCIe Mini slot with SIM card holder · Optional for Wi-Fi 7 / 4G LTE / 5G
USB	3 x USB3.1 (Type-A)
Digital Output	1 x Programmable LED
Watchdog	1–255 levels programmable
OS Support	
Microsoft Windows	<ul style="list-style-type: none"> Windows 10 Pro, IoT, LTSC, Enterprise Windows 11 Pro, IoT, LTSC, Enterprise

Technical Specifications (cont.)

- Linux**
- Ubuntu 20.04 LTS, 22.04 LTS, 24.04 LTS
 - Debian 11, 12, 13
 - Red Hat Enterprise Linux 8, 9
 - Rocky Linux 8, 9
 - AlmaLinux 8, 9
 - SUSE Linux Enterprise 15

Wireless Options

- Wi-Fi**
- Optional built-in Wi-Fi & Bluetooth module:
- 802.11a/b/g/n/ac/ax/be (Wi-Fi 7)
 - 2.4 GHz, 5 GHz & 6 GHz operation
 - Bluetooth 5.4
 - Occupies miniPCIe slot
 - 2 x SMA antenna connectors

- Cellular (4G LTE)**
- Optional built-in 4G (with GPS) module:
- Supports LTE/HSPA+/UMTS/EDGE/GPRS/GSM (4G with 3G fallback)
 - 1 x externally accessible SIM card slot
 - Occupies miniPCIe slot
 - SIM card provisioning available

4G Module Specifications

- Bands: 700/800/900/1800/2100/2600 MHz (4G), 850/900/2100 MHz (3G)
- Max downlink: 300 Mbps (42 Mbps on HSPA+)
- Max uplink: 150 Mbps (5.76 Mbps on HSPA+)
- GPS & GLONASS receiver (Standalone & Assisted modes)
- 2 x SMA connectors for diversity/MIMO antennas
- 1 x SMA connector for GPS antenna

Power

- Voltage Input**
- DC 12–24V ±10%, with overcurrent, overvoltage and polarity inverse protection

- Power Consumption**
- Max. 45W

Technical Specifications (cont.)

Watchdog Optional watchdog timer generates automatic system reset if software becomes unresponsive

Chassis

Construction Aluminium-magnesium alloy, fanless

Dimensions 138 mm (L) x 102 mm (W) x 48 mm (H)

Cooling Passive cooling (fanless)

Weight 1.06 kg

Mounting Wall mount or DIN rail

Environment

Operating Temperature -20°C to 60°C (-4°F to 140°F) with airflow (SSD)

Vibration 5–500 Hz, 1.5 Grms with SSD, per IEC 60068-2-64

Storage Temperature -40°C to 80°C (-40°F to 176°F) with airflow (SSD)

Shock 20G peak acceleration (11 ms duration) with SSD, per IEC 60068-2-27

Relative Humidity 5–95% (non-condensing)

EMC CE / FCC Class B

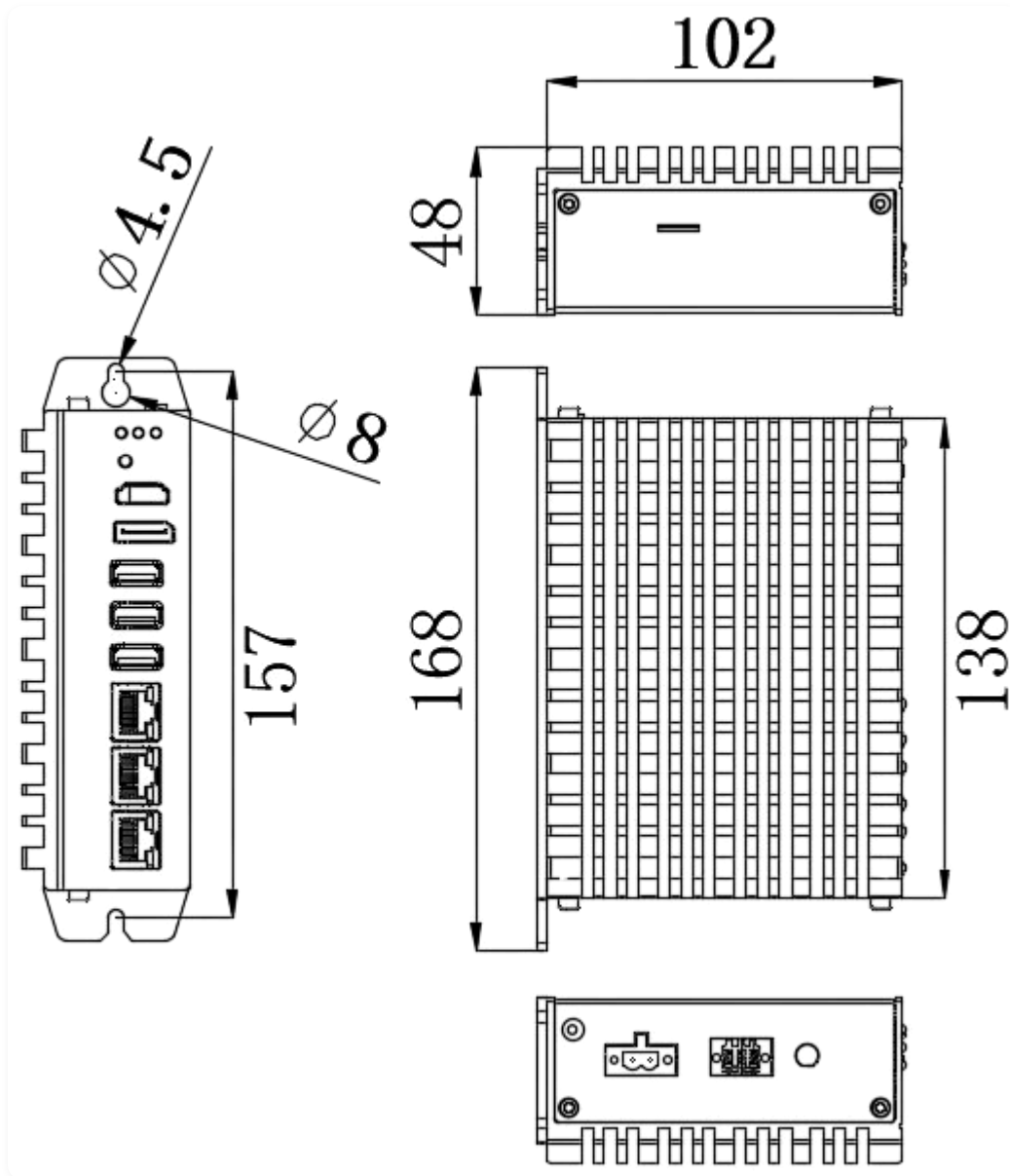
Certifications & Warranty

Certifications

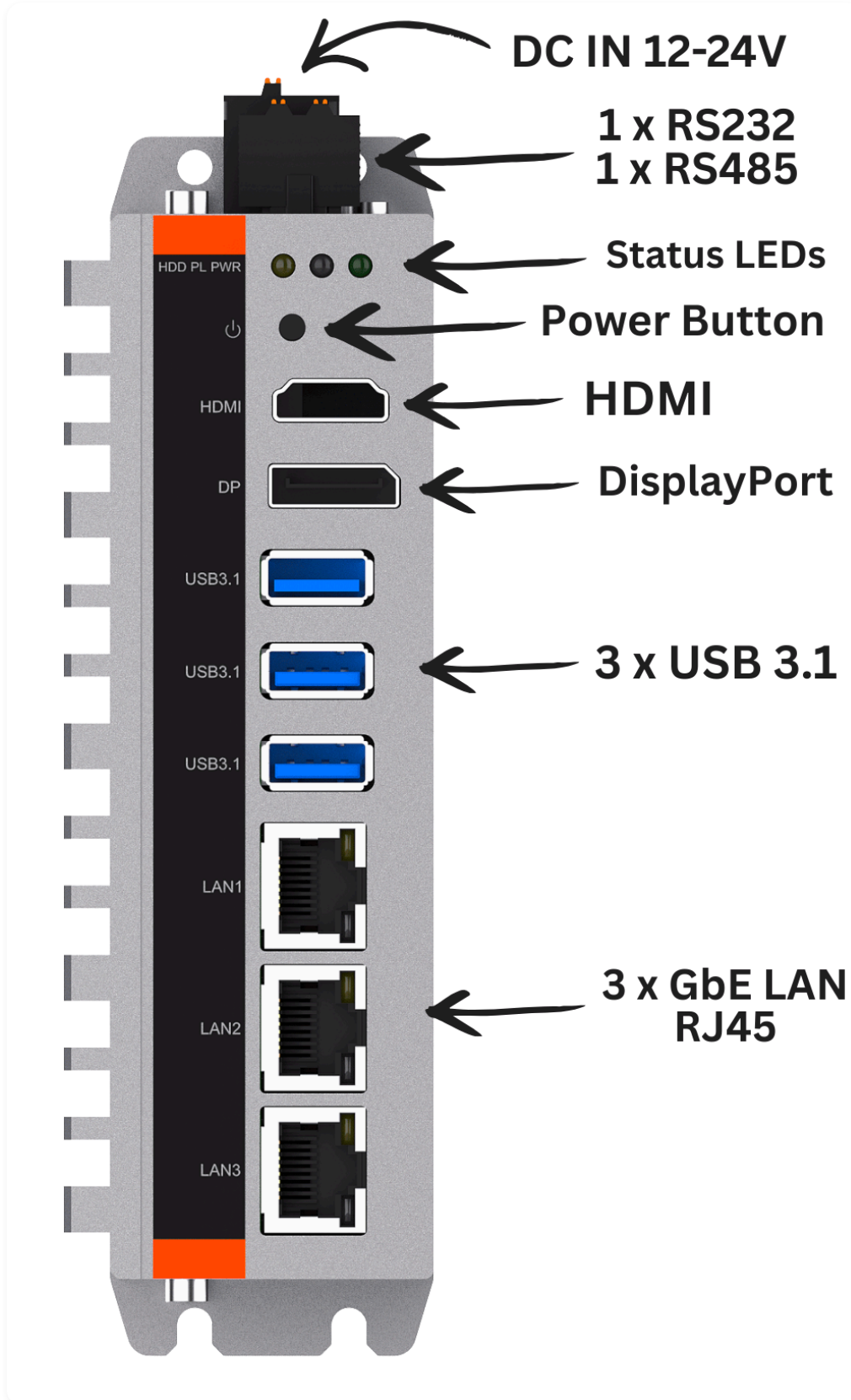
- CE
- FCC Class B
- RoHS Compliant
- WEEE Compliance Scheme member

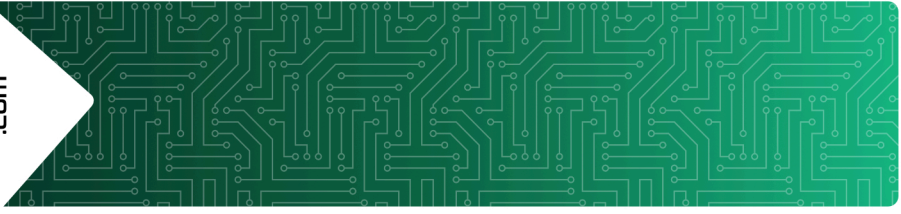
Warranty 2 years RTB, extendable to 3 or 5 years

■ Dimensions (mm)

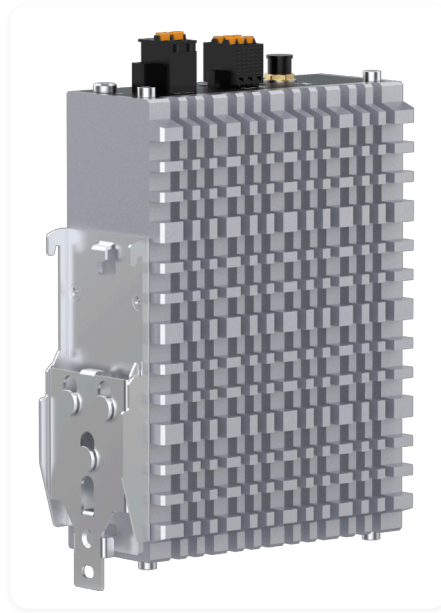
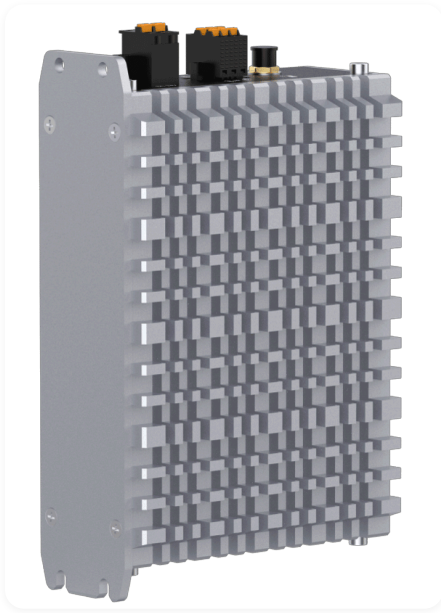
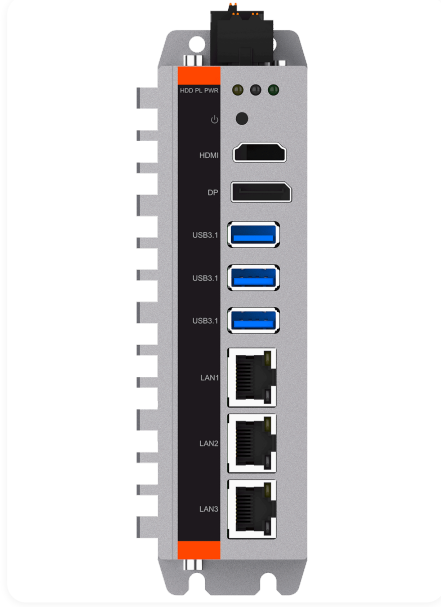
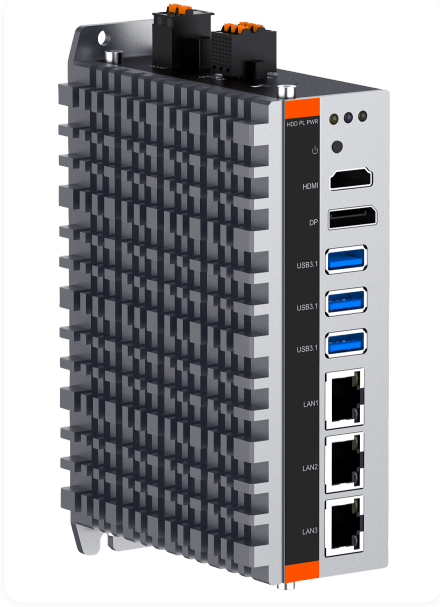


Port Layouts





Product Gallery



Specifications are subject to change without notice. E&OE.

All trademarks and product names mentioned are the property of their respective owners.

© 2026 Bowmonk Ltd. Techeonix is a trading name of Bowmonk Ltd, Diamond Road, Norwich, NR6 6AW, United Kingdom.