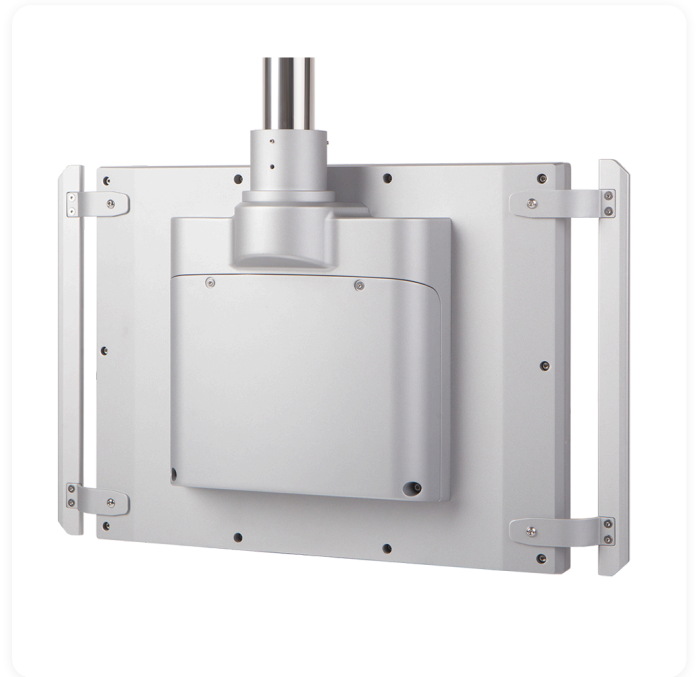


OP Series

Industrial HMI Monitors for Arm-Mounted Operator Workstations

Available variants: OP115-XG, OP116-HD, OP116-WX, OP118-HD, OP118-WX, OP121-HD



Product Overview

The OP Series is a range of industrial HMI monitors built for arm-mounted operator workstations in factory automation, machine control, and production line environments. Six models span 15 to 21.5 inches across XGA, WXGA, and Full HD resolutions - all with capacitive touch, full IP65 sealing, and swing ARM mounting compatible with NODKA 4460 square tube and Rittal CP 40 systems.

Every OP Series monitor accepts display signal via HDMI or VGA and communicates touch back to the host over USB. DC 12-24V power input with reverse connection, overvoltage and overcurrent protection is standard across the range. The modular button panel ships with a default five-button operator set and is fully configurable for customer-specific layouts - frontally accessible for field reconfiguration without removing the unit from the arm.

Configured and tested in the UK, with direct engineering support.

Product Highlights

- Six models: 15-inch to 21.5-inch screen sizes
- XGA (1024x768), WXGA (1366x768) and Full HD (1920x1080) resolution options
- Capacitive touch screen, USB interface - gloved-hand compatible
- Full IP65 - front and rear sealed on every model
- HDMI + VGA display signal input
- DC 12-24V input with reverse, overvoltage and overcurrent protection
- Swing ARM mounting - NODKA 4460 square tube and Rittal CP 40 compatible
- Modular operator button panel - fully configurable to customer specification
- Default button set: emergency stop, selection, red, green, key switch
- Frontally accessible for field reconfiguration
- Operating temperature: 0 degrees C to 50 degrees C
- Vibration: 1.5 Grms, IEC 60068-2-64 (SSD applied)
- Shock: 10G peak, IEC 60068-2-27
- EMC Class B
- Windows 7, Windows 10/11 IoT, Ubuntu, CentOS compatible
- 2 years RTB warranty, extendable to 3 or 5 years

Applications

Factory Automation

Production Line Control

Machine Control HMI

Operator Workstation

SCADA Interface

Process Monitoring

Cleanroom Control

Food and Beverage Processing

Pharmaceutical Manufacturing

Warehouse Automation

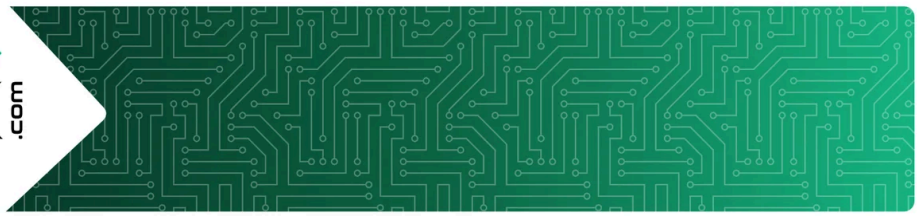
Technical Specifications

Model Overview

OP115-XG	15-inch, 1024x768 XGA, 400 cd/m ² , IP65, ARM mount, DC 12-24V	OP118-WX	18.5-inch, 1366x768 WXGA, 250 cd/m ² , IP65, ARM mount, DC 12-24V
OP116-WX	15.6-inch, 1366x768 WXGA, 400 cd/m ² , IP65, ARM mount, DC 12-24V	OP118-HD	18.5-inch, 1920x1080 Full HD, 350 cd/m ² , IP65, ARM mount, DC 12-24V
OP116-HD	15.6-inch, 1920x1080 Full HD, 350 cd/m ² , IP65, ARM mount, DC 12-24V	OP121-HD	21.5-inch, 1920x1080 Full HD, 250 cd/m ² , IP65, ARM mount, DC 12-24V

Common Specifications

Touch Type	Capacitive, USB interface	OS Support	Windows 7, Windows 10/11 IoT, Ubuntu, CentOS
Light Transmittance	87% or above	Input Voltage	DC 12-24V +/-10% (all models) <ul style="list-style-type: none"> Reverse connection protection Overvoltage protection Overcurrent protection 1 x 2-pin Phoenix connector (internal) 1 x illuminated power button (rear)
Display Input	1 x HDMI, 1 x VGA (all models)		
USB	<ul style="list-style-type: none"> 1 x USB 2.0 Type B (touch input from host) 2 x USB 2.0 Type A (internal) 1 x USB 2.0 2-in-1 (rear of housing) 		



Technical Specifications (cont.)

Mounting	Swing ARM - supports NODKA 4460 square tube and Rittal CP 40	Operating Temperature	0 degrees C to 50 degrees C
IP Rating	Full IP65 (front and rear, all models)	Storage Temperature	-20 degrees C to 60 degrees C
Default Button Set	<ul style="list-style-type: none"> • 1 x Emergency stop button • 1 x Selection button • 1 x Red push button • 1 x Green push button • 1 x Key switch 	Humidity	5-95% (non-condensing)
Custom Buttons	Up to 6-9 x 22mm (model-dependent), frontally accessible, hard-wired	Vibration	1.5 Grms, IEC 60068-2-64, random, 5-500 Hz, 1 hr/axis (SSD applied)
		Shock	10G peak acceleration (11 ms duration), IEC 60068-2-27
		EMC	Class B

Certifications

- Certifications**
- CE
 - EMC Class B
 - RoHS Compliant
 - WEEE Compliance Scheme member

Warranty

Warranty 2 years RTB, extendable to 3 or 5 years

Model Numbers

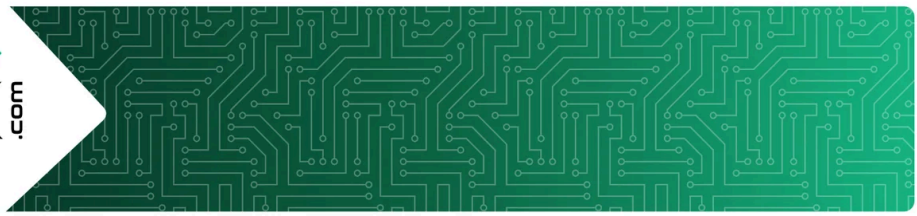
OP 1 XX - YY

Code	Meaning
OP	Operator Panel (HMI monitor series)
1	First generation
XX	Screen size in inches (15, 16, 18, 21)
YY	Resolution class (XG = XGA 1024x768, WX = WXGA 1366x768, HD = Full HD 1920x1080)

Example: OP116-HD = Gen 1, 15.6-inch, Full HD resolution

Ordering Information

Part Number	Description
OP115-XG	15-inch XGA capacitive touch HMI monitor, HDMI + VGA, full IP65, swing ARM mount, DC 12-24V
OP116-WX	15.6-inch WXGA capacitive touch HMI monitor, HDMI + VGA, full IP65, swing ARM mount, DC 12-24V
OP116-HD	15.6-inch Full HD capacitive touch HMI monitor, HDMI + VGA, full IP65, swing ARM mount, DC 12-24V
OP118-WX	18.5-inch WXGA capacitive touch HMI monitor, HDMI + VGA, full IP65, swing ARM mount, DC 12-24V
OP118-HD	18.5-inch Full HD capacitive touch HMI monitor, HDMI + VGA, full IP65, swing ARM mount, DC 12-24V



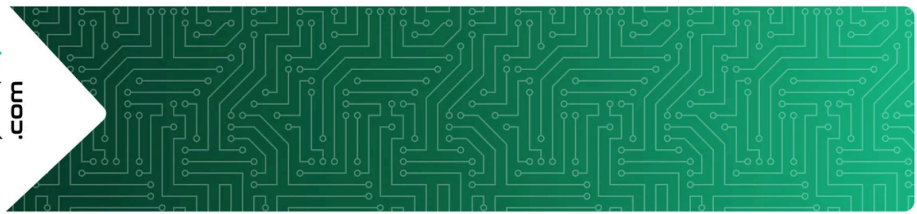
Ordering Information (cont.)

Part Number	Description
OP121-HD	21.5-inch Full HD capacitive touch HMI monitor, HDMI + VGA, full IP65, swing ARM mount, DC 12-24V

Specifications are subject to change without notice. E&OE.

All trademarks and product names mentioned are the property of their respective owners.

Copyright 2026 Bowmonk Ltd. Techeonix is a trading name of Bowmonk Ltd, Diamond Road, Norwich, NR6 6AW, United Kingdom.



Product Gallery

